



Dynham Road NW6

Parkheat  
*Sold on Service*





**Dynham Road, NW6**  
**£500,000**  
**Leasehold**

- Stunning 2 bedroom apartment
- Excellent condition throughout
- Private Entrance
- 513 sq ft / 47.7 sq m
- Communal garden access
- Bright south facing 22" open plan kitchen reception room
- Master bedroom with fitted storage
- Amenities of West End Lane a short walk away
- 6 minute walk to West Hampstead stations (Overground, Jubilee and Thameslink)
- Chain free

Belsize Park/Hampstead  
 208 Haverstock Hill  
 NW3 2AG  
 Sales 020 7431 1234  
 Lettings 020 7431 3104  
[nw3@parkheath.com](mailto:nw3@parkheath.com)

South/West Hampstead  
 192 West End Lane  
 NW6 1SG  
 Sales & Lettings  
 Tel 020 7794 7111  
[192@parkheath.com](mailto:192@parkheath.com)

Kensal Rise  
 54-56 Chamberlayne Rd  
 NW10 3JH  
 Tel 020 8960 4845  
[kensal@parkheath.com](mailto:kensal@parkheath.com)

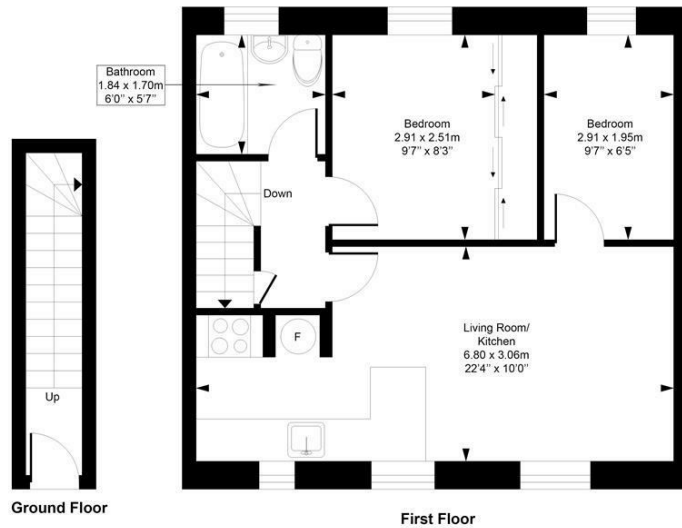
Property Management  
 192 West End Lane  
 NW6 1SG  
 020 7433 6174  
[pm@parkheath.com](mailto:pm@parkheath.com)

[www.parkheath.com](http://www.parkheath.com)

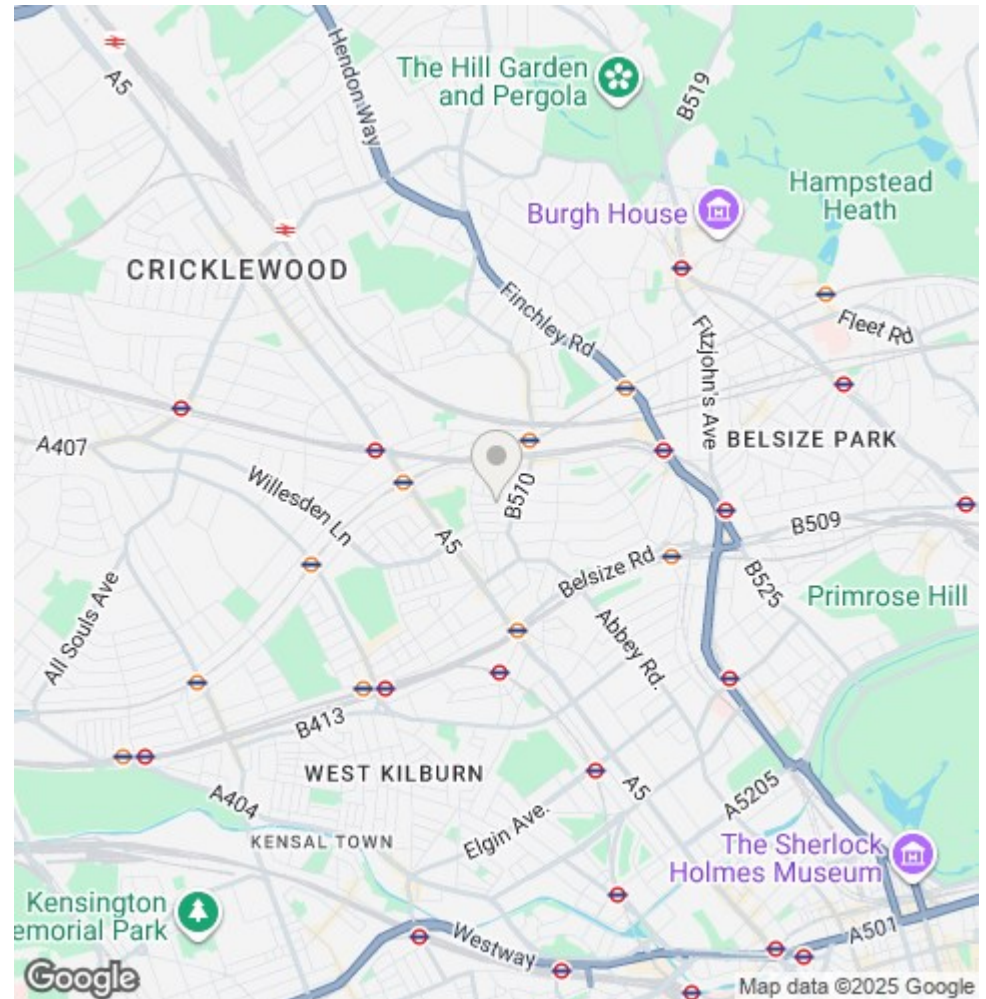
**Parkheath**  
*Sold on Service*

**Camden Tax band D**

**Dynham Road**  
 Approximate Gross Internal Area = 47.7 Sq m / 513 sq ft



Measured in accordance with RICS guidelines. Every attempt is made to ensure accuracy  
 However all measurements are approximate.  
 The floor plan is illustrative purposes only and is not to scale  
 ELLIE CLAIRE PHOTOGRAPHY LTD  
 www.ellieclairephotography.com



The particulars do not constitute part of an offer or contract. The particulars, including text, photographs and plans, are for the guidance only of prospective purchasers/tenants and must not be relied upon as statements of fact. The descriptions provided therein represent the opinion of the author and whilst given in good faith should not be construed as statements of fact. Nothing in these particulars shall be deemed a statement that the property is in good condition or otherwise or that any services or facilities are in good working order. All measurements are approximate